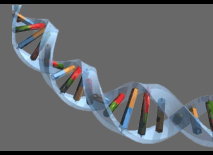




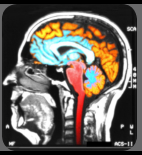
Cognition



and



Depression



in MULTIPLE SCLEROSIS



The University of Utah
School of Medicine



National
Multiple Sclerosis
Society

The Brain Institute at the University of Utah

383 Colorow Drive, 2nd Floor Conference Room

Friday, June 12, 2009

12:30 p.m. to 4:30 p.m.

VISITING FACULTY

Sharon G. Lynch, M.D.
Kansas University Medical Center
Associate Professor of Neurology

Maria Houtchens, M.D.
Harvard Medical School
Instructor in Neurology

UNIVERSITY OF UTAH FACULTY

Deborah Yurgelun-Todd, Ph.D.
Professor of Psychiatry
Director of Cognitive Neuroimaging
The Brain Institute

AGENDA

12:30 p.m. Registration and Light Lunch

12:50 p.m. **John W. Rose, M.D. and Dee Dee Fox** - Welcome and Introductions

1:00 p.m. **Deborah Yurgelun-Todd, Ph.D.**
Magnetic Resonance Imaging Findings in Mood Disorders and MS

2:00 p.m. **Sharon G. Lynch, M.D.**
Information Processing speed in patients with Multiple Sclerosis

3:00 p.m. BREAK with EXHIBITORS

3:30 p.m. **Maria Houtchens, M.D.**
Changes in Memory, Concentration and other Mental Skills in MS

4:30 p.m. Adjourn

COMMERCIAL SUPPORT

This CME conference receives a generous educational grant from TEVA Neuroscience

EXHIBITORS

BIOGEN IDEC – Linde Smith
Medtronic - Sally Ashby

PLANNING COMMITTEE

John W. Rose, M.D.

Professor of Neurology, University of Utah

Dee Dee Fox

Utah Chapter, National Multiple Sclerosis Society

Stefan M. Pulst, M.D., Dr. MED

University of Utah Department of Neurology, Chairman

Amy Davis, Ph.D.

The Brain Institute, University of Utah

Julia Klein, A.P.R.N.

Nurse Practitioner, Neurology, University of Utah

Conference Format: Lectures with discussion comprise the format for the conference and physicians are encouraged to bring questions. The program will be conducted in an informative atmosphere to stimulate networking and discussion. To maximize time, a light lunch will be available in the meeting room. This conference is also supported by the Utah State Chapter, National Multiple Sclerosis Society.

Participants: Neurologists and other healthcare providers such as neurosurgeons, family and other primary-care physicians, nurse practitioners, physician assistants, residents, and students, will find the information presented during this meeting both interesting and valuable.

Location: The **Cognition and Depression in Multiple Sclerosis** conference will be held at the University of Utah Brain Center in Research Park. The Brain Center is located at 383 Colorow Drive, Salt Lake City, UT 84108. If you need a map to the Brain Center, please contact Michael Huntsman (info@huntsmanconsulting.com). If you would like to reserve a sleeping room, please call the University Park Hotel at 800-637-4390, or the University of Utah Guest House at 888-416-4075.

CONTACT US

For More information or questions, please contact the Conference Registration Office, Huntsman Consulting, 188 W. 2000 S. Bountiful, Utah 84010, (801) 683-7561, info@huntsmanconsulting.com

REGISTRATION FORM

Cognition and Depression in Multiple Sclerosis

Friday, June 12, 2009

Please mail or fax registration form to:

University of Utah Multiple Sclerosis Conference

c/o Huntsman Consulting, Inc.

188 W. 2000 S., Bountiful, Utah 84010-5553

Phone: (801) 683-7561

Fax: (801) 335-4905

Contact Information:

Name: _____

Degree/Specialty: _____

Affiliation: _____

E-mail Address: _____

Registration Fee: \$75.00 USD
Early-Bird Registration Fee: \$50.00 (before June 10th)

Check:

Payable to the University of Utah, Department of
Neurology (TID# 87-6000525)

Campus Order Number: _____

Credit Card Number: _____

Credit Card Expiration: _____

Signature: _____

Credit card charges will show up on your bill as
Huntsman Consulting

CME STATEMENTS

Accreditation: This activity has been planned and implemented in accordance with the Essential Areas and policies of the Accreditation Council for Continuing Medical Education through the joint sponsorship of The University of Utah School of Medicine and the National Multiple Sclerosis Society. The University of Utah School of Medicine is accredited by the ACCME to provide continuing medical education for physicians.



AMA Credit: The University of Utah School of Medicine designates this educational activity for a maximum of 3 *AMA PRA Category 1 Credit(s)*[™]. Physicians should only claim credit commensurate with the extent of their participation in the activity.

OEO/AA Statement: The University of Utah does not discriminate on the basis of race, color, national origin, sex, disability, age, veteran's status, or sexual orientation and provides access to all its programs and activities. The following person has been designated to handle inquiries regarding the non-discrimination policies: Manager, OEO/AA, (801) 581-8365, 201 S. President's Circle, RM 135, Salt Lake City, UT 84112.

ADA Statement: The University complies with the Americans with Disabilities Act Amendments Act of 2008 and Section 504 of the Rehabilitation Act by providing qualified individuals with disabilities access to University programs, treatment, services, and activities. A request for accommodation or auxiliary services for: faculty or Staff can be made by contacting: Manager, OEO/AA, (801) 581-8365, 201 S. President's Circle, RM 135, Salt Lake City, UT 84112; students and other participants by contacting Director, CDS, (801) 581-5020, 162 Olpin Union Building, Salt Lake City, UT 84112. Reasonable prior notice for accommodation requests is required.

Registration Cancellation Policy: The Conference Registration-Cancellation deadline is June 9, 2009. Conference Registration Cancellations received at the Conference Registration Office on or before June 9, 2009, will be given a refund, minus a \$25 Registration Cancellation Fee. No Conference Registration Refunds will be given for Registration Cancellation Requests received at the Conference Registration Office after June 9, 2009. Please send Registration Cancellation Requests to E-mail: info@huntsmanconsulting.com or Fax: (801) 335-4905.

Paying by Check?

Please make checks payable to University of Utah Department of Neurology and mail checks and registration information to Cognition and Depression in MS, c/o Huntsman Consulting, 188 W. 2000 S. Bountiful, Utah 84010-5553

More information or questions? contact,

Cognition and Depression in Multiple Sclerosis Registration Office

Phone: (801) 683-7561

Email: info@huntsmanconsulting.com